

# Obstetrical Society Of Philadelphia

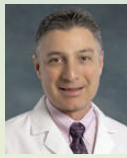
## Council Members: 2018-19



### OFFICERS



**PRESIDENT**  
Peter Schnatz, DO  
The Reading Hospital and Medical Center  
Department of OB/GYN  
6th Ave & Spruce Street  
West Reading, PA 19611



**PRESIDENT ELECT**  
Don DeBrakeler, DO  
Center for Women's Health of Montgomery  
County  
1000 Walnut Street, Suite 122  
Lansdale, PA 19446



**VICE PRESIDENT**  
Norman Brest, MD  
Lankenau Medical Building, East  
100 East Lancaster Avenue, Suite 561  
Wynnewood, PA 19096-3450



**TREASURER**  
Aasta Mehta, MD  
Pennsylvania Hospital  
800 Spruce Street  
Philadelphia, PA 19107



**SECRETARY**  
Fay Wright, MD  
111 E. Levering Mill Road  
Bala Cynwyd, PA 19004



**ASSISTANT SECRETARY**  
Lisa Perriera, MD  
Thomas Jefferson Hospital  
833 Chestnut Street  
1st Floor  
Philadelphia, PA 19107

### MEMBERS AT LARGE (4)



**Luisa Galdi, DO**  
(1st Year)  
Beebe Healthcare  
424 Savannah Road  
Lewes, DE 19958



**Stephen Rubin, MD**  
(2nd Year)  
Fox Chase Cancer Center  
Division of Gynecologic Oncology  
333 Cottman Avenue  
Philadelphia, PA 19111



**Nicole Salva, MD**  
(1st Year)  
Penn Medicine Washington Square  
14th Floor, 800 Walnut Street  
Philadelphia, PA 19107



**Daryl Stoner, M.D.**  
(1st Year)  
Women's Associates  
Einstein Healthcare Network  
210 Mall Blvd, Suite 203  
King of Prussia, PA 19406

### COMMITTEE APPOINTMENTS



**Harish Sehdev, MD**  
*Resident Education Committee*  
Pennsylvania Hospital  
2 Pine East 800 Spruce Street  
Philadelphia, PA 19107



**Helen Widzer, MD**  
*Nominating Committee*  
Women's Associates for Healthcare  
Einstein Healthcare Network  
633 W. Germantown Pike Suite 203  
Plymouth Meeting, PA 19462



**Abigail Wolf, MD**  
*Membership Chair*  
Thomas Jefferson Hospital  
833 Chestnut Street, 1st Floor  
Philadelphia, PA 19107-5127



**Guy Hewlett, MD**  
*Resident Education Liaison*  
Cooper University Hospital  
Dept of Ob/Gyn  
One Cooper Plaza  
Camden NJ 08103



**Jane Porcelan, MD, JD**  
*Medico/Legal*  
Lankenau Medical Building, West  
100 Lancaster Avenue, Suite #433  
Wynnewood, PA 19096



**Mark B. Woodland, MD**  
*Archives*  
The Reading Hospital and Medical Center  
Department of OB/GYN  
6th Ave & Spruce Street  
West Reading, PA 19611



**Larry Glazerman, MD**  
*Resident Education Committee*  
Planned Parenthood of Delaware  
625 N. Shipley St.  
Wilmington DE 19801



**Rori Dajao, MD**  
*Newsletter Committee*  
Cooper University Hospital  
PGY-3  
One Cooper Plaza  
Camden NJ 08103



**Nicole Salva, MD**  
*Resident Education Committee*  
Penn Medicine Washington Square  
14th Floor, 800 Walnut Street  
Philadelphia, PA 19107



**Albert El-Roeiy, MD**  
*Website*  
Crozer-Chester Medical Center  
One Medical Center Boulevard  
Upland, PA 19013-3995



**Joan Zeidman, MD**  
*Bylaws*  
919 Conestoga Road  
Building 1, Suite #104  
Rosemont, PA 19010



**Arnold Cohen, MD**  
*Foundation*  
Albert Einstein Medical Center  
5500 Old York Road  
Philadelphia, PA 19141



**Sherry Blumenthal, MD**  
*PA Med Society Liaison*  
2701 Blair Mill Rd. Suite C  
Willow Grove, PA 19090



**Susan Kaufman, DO**  
*Resident Education Committee*  
Suite S-93, Executive Mews  
1930 State Hwy 70 East  
Cherry Hill, NJ 08003